

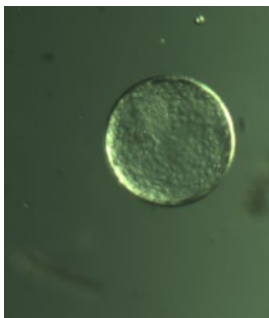


Phone: 217-438-9910 Fax: 217-438-3615  
e-mail: [zmgb@richlandranch.com](mailto:zmgb@richlandranch.com)

## Why Use Embryo Transfer?

### Common uses include:

1. Obtaining more than one foal per year out of top producing mares;
2. Production of foals from mares in training or showing;
3. Production of foals from late-foaling mares, leaving them open over the winter for an early start the following spring;
4. Production of foals from mares with problems that prevent pregnancy, pregnancy maintenance, or foaling;
5. Production of foals from some otherwise barren mares.



During the breeding process the mares are examined daily to accurately determine the day of ovulation. Seven to eight days after ovulation a catheter is inserted into the donor mare's uterus. The uterus is sequentially flushed with 3-4 separate liters of a special electrolyte/nutrient solution. The solution is passed through a filter from which the embryo is recovered using a microscopic search. After recovery and evaluation, the embryo is washed to remove any contaminants, placed in a nutrient media, and either inserted through the cervix and into the uterus of a specially prepared recipient mare, or shipped to an embryo transfer facility. The first pregnancy checks are usually 5 and 7 days after transfer, which would be days 12 and 14 after ovulation.

Success rates for embryo transfer can be measured for two facets of the procedure:

1. Embryo recovery from the donor mare;
2. Establishment of pregnancy in the recipient mare.

Embryo recovery is usually the rate-limiting step in equine embryo transfer. Recovery rates will vary with the individual mare's fertility; young mares can have very high rates, typically around 80% per cycle. Older mares with history of infertility, as a group, will have recovery rates around 30% per cycle. Individuals within these groups will have higher or lower recovery rates. Once the embryo is recovered, one can expect a pregnancy success rate of approximately 80% at 14 days, with about a 10% rate of pregnancy loss following that time. Pregnancy rates for transported embryos are slightly lower than for on-site transfer.

We have recipient mares available at Richland Ranch or we can coordinate your flush with a recipient herd of your choice.

